

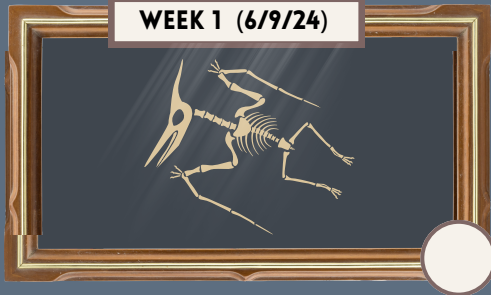
MUSEUM TICKET

FOR ONE PERSON ONLY

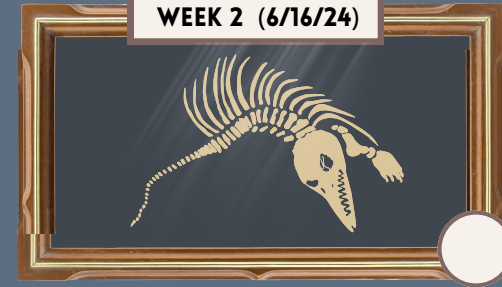
ADULT

READ YOUR WAY THROUGH OUR INCREDIBLE DINOSAUR FOSSIL EXHIBIT AT THE LIBRARY'S VERY FIRST DINOSAUR MUSEUM! EACH DISPLAY REPRESENTS A WEEK OF OUR SUMMER READING PROGRAM. YOUR GOAL IS TO READ 5 HOURS EACH WEEK IN ORDER TO VISIT THE NEXT WEEK'S DISPLAY. READ YOUR WAY THROUGH THE MUSEUM'S EXHIBITS AND BE SURE TO STOP IN THE LIBRARY WHEN YOU FINISH ALL 7 WEEKS AND GRAB A RAFFLE TICKET FOR OUR GRAND PRIZE DRAWING IN JULY. CHECK EACH WHITE CIRCLE ON EACH DISPLAY YOU COMPLETE!

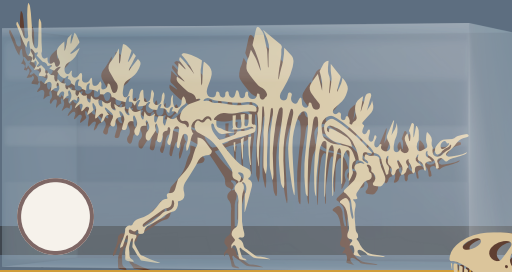
WEEK 1 (6/9/24)



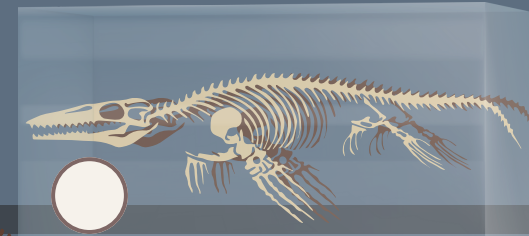
WEEK 2 (6/16/24)



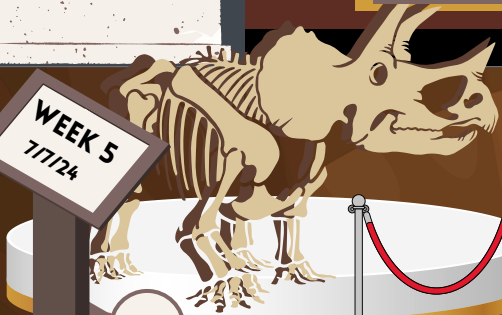
WEEK 3 (6/23/24)



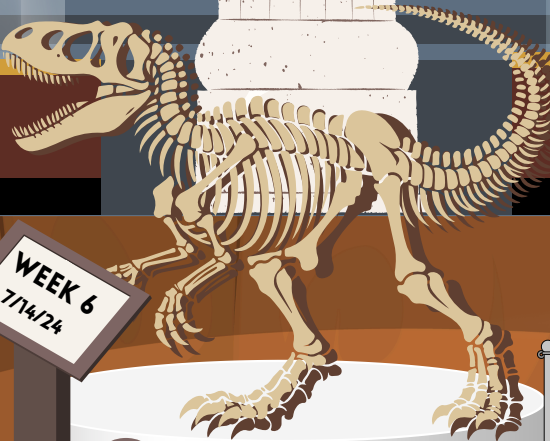
WEEK 4 (6/30/24)



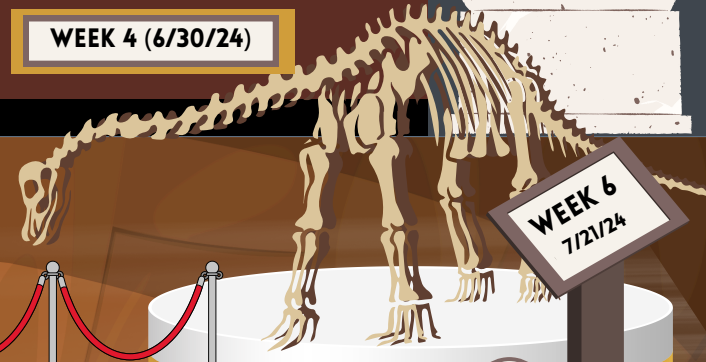
WEEK 5
7/7/24



WEEK 6
7/14/24



WEEK 6
7/21/24



FAYETTEVILLE
LINCOLN
LIBRARY